

Your visit to CAFT

THE CHILDREN'S
**ADVENTURE
FARM**
TRUST



Hello!

We are so pleased that you are coming to visit The Children's Adventure Farm Trust with your group / family. By now you will have read the Information Pack and completed the Application Form. Now, we need you to complete this booklet summarising all the details of your group/family. Whilst completing, please refer back to the "Information Pack" for CAFT details and for residential visits, please refer back to each child's individual "Getting to know" form. When we have received this completed booklet, we will begin putting together the arrangements for your visit. Please note, all fields are mandatory and we cannot continue to process your application until we have received all the fully completed forms.

After we have received all completed documentation, we will send you a Summary Sheet detailing all the information provided by you so far. Please thoroughly check the details, inform us of any changes that need to be made, then sign and return it to us. We cannot confirm your visit until you have signed and returned the Summary Sheet.

After all the paperwork is out of the way, the fun will begin on your arrival at the Farm and we are so looking forward to your visit.

Please remember that as a charity we rely solely on the generosity of our supporters to provide these visits completely free of charge to you. Please therefore help us to make every penny go further by providing us with the information we require as timely as possible. Thank you.

Group Details

Group name

Date of visit

Lead contact

Safeguarding lead

Total number of children

Total number of adults

Group leader on visit

First Aider/s

How are you getting to CAFT? Please note, coach transportation is not permitted so we recommend smaller vehicles such as mini buses as they are easier to navigate through our narrow country lanes.

Will there be any changes of staff / carers throughout the visit?

If you would like a themed activity day, please select from the options below.

Witches & Wizards

Pirate Day

Heroes

We would like to request:

...because

Are there any activities / hobbies which interest your group? If possible, would you like us to incorporate them into your visit?

Menu choices

Below are the menus for your visit to CAFT. Please make a selection for the days with two options available.

Three day residential:

Day 1:

Light meal - Soup and Sandwiches (cheese / ham / tuna)

Main meal - Roast Chicken Dinner

Day 2: (Please choose one option for your light and main meals)

Light meal options - would you like this for lunch or dinner?

Make your own wraps (spicy / plain chicken, ham, cheese, tuna with salad)

Mac 'n' Cheese with garlic bread

Brunch (bacon, sausage, hash browns, scrambled eggs, beans and toast)

Cheese / beans / spaghetti on toast

Main meal options - would you like this for lunch or dinner?

Make your own pizza with homemade wedges

Lasagne and salad

Sausage and mash with peas or beans

Meat and potato pie with peas or beans

Chicken curry with rice and naan bread

Sweet and sour chicken

Day 3:

Brunch

Snacks

Bread

Fruit

Biscuits

Smoothies

Crisps

Small chocolate bar

Decorate your own biscuits

Make your own pancakes

Fun Day Trip:

Picnic Boxes with sandwiches, drink, yoghurt, crisps and snack

Group Dietary Requirements

Please summarise the group / family dietary and eating requirements. Specific details for each individual child can be found in their completed “Getting to know” form.

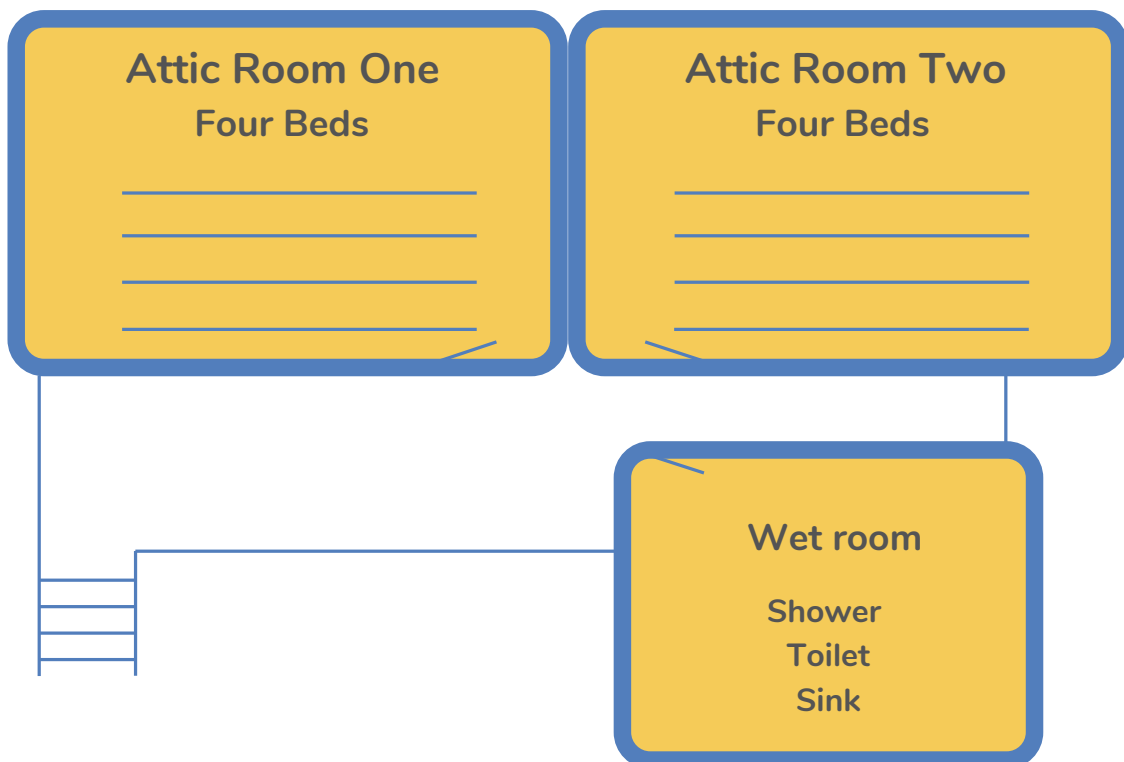
Accommodation

The Farmhouse - First Floor

Please complete with the names of the staff and children in each room.



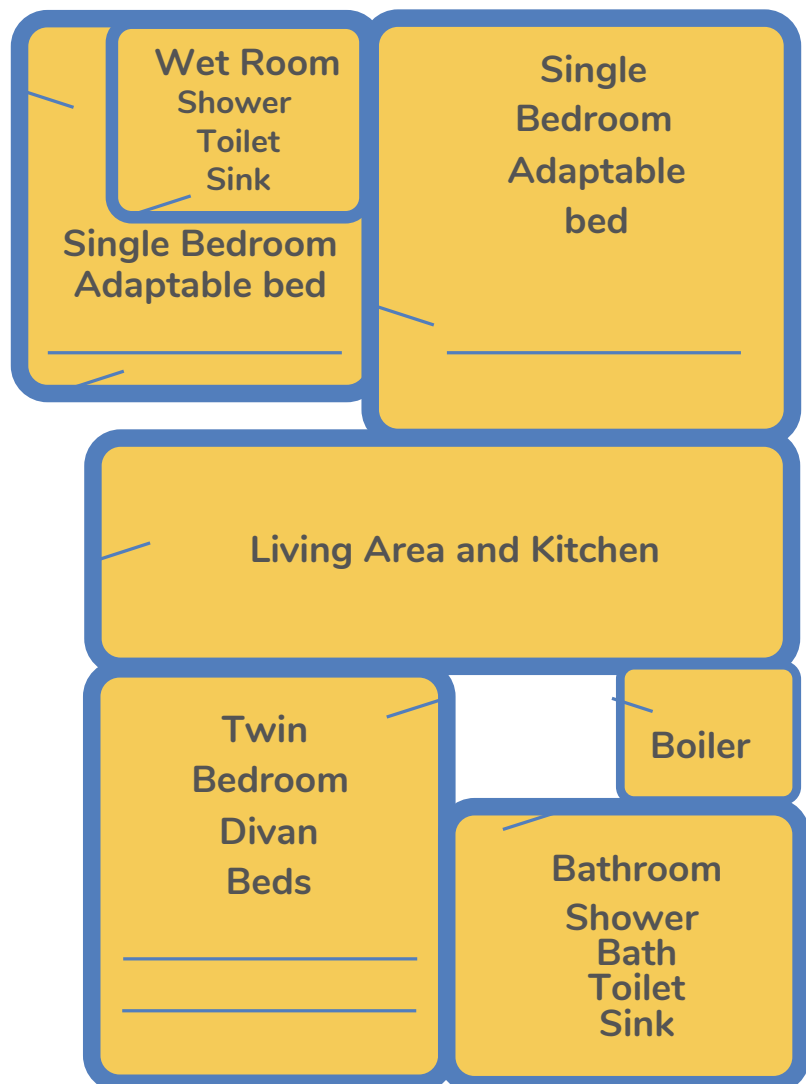
The Farmhouse Second Floor



The Apartments Stable One



The Apartments Stable Two



Basic Summary Information

Please complete a summary box for each child. All boxes are mandatory and information provided must be cross checked against the information provided by parents / guardians on the "Getting to know" form.

Child	Age	Gender	Photo release permission	Risk Assessment provided
Additional Needs				
Dietary Requirements				
Additional Information				

Child	Age	Gender	Photo release permission	Risk Assessment provided:
Additional Needs				
Dietary Requirements				
Additional Information:				

Child	Age	Gender	Photo release permission	Risk Assessment provided
Additional Needs				
Dietary Requirements				
Additional Information				

Child:	Age:	Gender:	Photo release permission	Risk Assessment provided:
Additional Needs				
Dietary Requirements				
Additional Information				

Child:	Age	Gender	Photo release permission	Risk Assessment provided
Additional Needs				
Dietary Requirements				
Additional Information				

Child	Age	Gender	Photo release permission	Risk Assessment provided
Additional Needs				
Dietary Requirements				
Additional Information				

Child:	Age:	Gender:	Photo release permission	Risk Assessment provided:
Additional Needs				
Dietary Requirements				
Additional Information				

Child:	Age	Gender	Photo release permission	Risk Assessment provided
Additional Needs				
Dietary Requirements				
Additional Information				

Child	Age	Gender	Photo release permission	Risk Assessment provided
Additional Needs				
Dietary Requirements				
Additional Information				

Child:	Age:	Gender:	Photo release permission	Risk Assessment provided:
Additional Needs				
Dietary Requirements				
Additional Information				

Child:	Age	Gender	Photo release permission	Risk Assessment provided
Additional Needs				
Dietary Requirements				
Additional Information				

Child	Age	Gender	Photo release permission	Risk Assessment provided
Additional Needs				
Dietary Requirements				
Additional Information				

Child:	Age:	Gender:	Photo release permission	Risk Assessment provided:
Additional Needs				
Dietary Requirements				
Additional Information				

Child:	Age	Gender	Photo release permission	Risk Assessment provided
Additional Needs				
Dietary Requirements				
Additional Information				

Child	Age	Gender	Photo release permission	Risk Assessment provided
Additional Needs				
Dietary Requirements				
Additional Information				

Child:	Age:	Gender:	Photo release permission	Risk Assessment provided:
Additional Needs				
Dietary Requirements				
Additional Information				

Child:	Age	Gender	Photo release permission	Risk Assessment provided
Additional Needs				
Dietary Requirements				
Additional Information				

Child	Age	Gender	Photo release permission	Risk Assessment provided
Additional Needs				
Dietary Requirements				
Additional Information				

Child:	Age:	Gender:	Photo release permission	Risk Assessment provided:
Additional Needs				
Dietary Requirements				
Additional Information				

Child:	Age	Gender	Photo release permission	Risk Assessment provided
Additional Needs				
Dietary Requirements				
Additional Information				

Child	Age	Gender	Photo release permission	Risk Assessment provided
Additional Needs				
Dietary Requirements				
Additional Information				

Child:	Age:	Gender:	Photo release permission	Risk Assessment provided:
Additional Needs				
Dietary Requirements				
Additional Information				

Child:	Age	Gender	Photo release permission	Risk Assessment provided
Additional Needs				
Dietary Requirements				
Additional Information				

Contact us

Tel: 01565 830 447

Email: info@caft.co.uk

Website: www.caft.co.uk

Address: The Children's Adventure Farm Trust

Booth Bank Farm

Reddy Lane

Millington

WA14 3RE



@CAFTCharity #CAFT



Registered Charity Number: 1003675